

SNDT Women's University

ShreematiNathibaiDamodarThackersey Women's University



NAAC – SSR CRITERION III SUPPORTING DOCUMENTS For

3.1.5- Institution has the following facilities to support research

3.1.5- Institution has the following facilities to support research

No	Facility	Year of establishment
1	Central Instrumentation Room	1978
2	Animal House Facility	1999
3	Media Laboratory/ Studio	1990
4	Research and Statistical Database	2012
5	Moot Court	2009

Central Instrumentation Room, S.N.D.T Women's University

The Department of Analytical Chemistry was established in the year 1978 and has the facility of Central Instrumentation Room. The facility houses various instruments like spectrophotometers, flame photometer, gas chromatography, mass spectroscopy and HPLC. The facility provides variety of instruments that focus on enhancing technical skills and knowledge of students and faculty.

Animal House Facility at C. U. Shah College of Pharmacy, S.N.D.T Women's University

The animal house facility at C. U. Shah College of Pharmacy is registered with The Committee for the Purpose of Control and Supervision of Experiments on Animals (CPCSEA) Department of Animal Husbandry and Dairying (DAHD), Ministry of Fisheries, Animal Husbandry and Dairying (MoFAH&D), Govt of India. with registration number 39/PO/Re/S/99/CPCSEA. The animal house was established in 11/03/1999.

The institute also has Institutional Animal Ethics Committee (IAEC), which was renewed on 14/08/2020 and the committee is valid till 13/08/2025. Annually two meetings of IAEC are held and annual inspection is carried out. The institute is actively involved in pre-clinical research using small animals like rats and mice.

Media Laboratory/ Studio, S.N.D.T Women's University

Department of Communication and Media studies has the Media lab (studio) for training of students. The studio was established in July 1990. The studio with approximately 1200 sq feet area is centrally air-conditioned, acoustically treated with HD & 4k mirrorless cameras, editing set up, personalized attention and immense scope for hands-on exploration. Students learn crucial 21st century skills in the process of learning audio visual production. The Department is equipped with state-of-the-art facilities for recording of e-learning classes, narrations etc.

Research and Statistical Database, S.N.D.T Women's University

BMK-Knowledge Resource Centre
Details of e-resources & databases

The following research and statistical databases are available at SNDTWU

E-RESOURCES under E – Shodhsindhu

(IP Based – Access from Churchgate and Juhu Campus only)

1. JCCC

The Consortium provides current as well as archival access to more than 4500 core and peer-reviewed journals and nine bibliographic databases from 23 publishers and aggregators in different disciplines. These e-resources covers almost all subject disciplines including arts, humanities, social sciences, physical sciences, chemical Sciences, life sciences, computer sciences, mathematics and statistics, etc.

Link: <https://jgateplus.com/search/>

2. JSTOR

It offers high-quality, interdisciplinary content to support scholarship and teaching. It includes over one thousand leading academic journals across the humanities, social sciences, and sciences, as well as select monographs and other materials valuable for academic work

Link: <http://www.jstor.org/>

3. ISID Institute for Studies in Industrial Development

ISID On-line Index to Indian Social Science Journals offers a unique facility to retrieve the desired information through keyword search to the users. The coverage has since been improved by not only keeping the index updated, but also by adding a number of new social science journals. Presently, the On-Line Database Index covers 252 Indian social science journals covering the disciplines of economics, political science, public administration, sociology, social anthropology, business management, finance, geography, social work, health and education, etc. The Institute has been maintaining on-line computerized newspaper clippings on wide-ranging subjects and is referred to as the Press Clippings Index (PCI).

Link : <http://isid.org.in/>

Database Subscribed (IP Based)

1. APA PsycARTICLES (Access from Churchgate campus)

PsycARTICLES® is a robust database offering complete access to the full text of nearly 80 landmark journals contains more than 163,000 articles in behavioral science and related fields ranging from education, to nursing, to business, to neuroscience. It includes all journal articles, book reviews, letters to the editor, and errata from each journal. Coverage spans 1894 to present.

Link: <https://psycnet.apa.org/search>

2. ELSEVIER Pharmacy: (Access from Juhu)

Access to 70 Pharmacy Journals from the areas of Pharmacology, Toxicology and Pharmaceutical Science.

Link : <http://www.elsevier.com/journals/subjects/pharmacy>

Databases Subscribed (ID & Password Based)

1. Indiastat.com

Indiastat.com is owned by Datanet India. Indiastat.com serves with authentic and perhaps the most comprehensive compilation of secondary level socio-economic statistical information about India and its states on various socio-economic parameters. These parameters are: General Info, Demographics, Economy, Agriculture, Civil Supplies and Consumer Affairs, Environment and Forest, Industries, Infrastructure, Companies, Education, Health, Housing, Labour & Workforce, Polity, Media, Insurance, Tourism, Crime & Law, Social Welfare & Developmental Schemes etc. It provides secondary level statistical information about India, its states, regions and sector. Indiastat.com is a cluster of 56 associate websites wherein 19 websites are sector-specific, 6 are regional websites and 31 websites are state-specific.

Link : <http://www.indiastat.com/>

2. IEEE Institute of Electrical and Electronics Engineers: IEEE All-Society Periodicals Package (ASPP) + IEEE Proceedings Order Plan (POP)

Delivering full text access to the world's highest quality technical literature in engineering and technology. IEL Online combines high-quality technical literature with the power of online searching, including: 169 IEEE online society-sponsored journals, transactions, and magazines; included in IEEE ASPP; peer-reviewed publications, concentrating on theoretical and experimental papers; quality magazines focusing on practical applications in research, design, and specification, more than 324,000 documents, many of them available in HTML as well as the original PDF format. POP offers conference papers through latest conference proceedings.

Link: <http://www.ieeexplore.ieee.org/>

3. EPWRF India Time Series (EPWRFITS)

EPWRF is disseminating data in the time-series format, using various modes of publications, hard copy as well as electronic modes. In this context, it has been observed that the CDs brought out by the EPWRF have been quite popular. The datasets have been structured under various modules: Financial Markets, Banking Statistics, Domestic Product of States of India, Finances of State Governments, Combined Government Finances, National Accounts Statistics, Price Indices, Agricultural Statistics, Power Sector, Industrial Production, Annual Survey of Industries, External Sector, Finances of the Government of India.

Link : <http://www.epwrfits.in/>

4. ProQuest Central (Covers 47 databases)

This database serves as the central resource for researchers at all levels. Covering more than 160 subject areas, ProQuest Central is the largest aggregated database of periodical content. This award-winning online reference resource features a highly-respected, diversified mix of content including scholarly journals, trade publications, magazines, books, newspapers, reports and videos. This database covers following subjects: Arts, Business, Health & Medicine, History, Literature & Language, News & Newspapers, Science & Technology and Social Sciences.

Link: <http://search.proquest.com/>

ARCHIVAL DATABASES (Access from Churchgate campus on IP)

1. Women's Study Archive

The Women's Studies Archive connects archival collections concerning women's history from across the globe and from a wide range of sources. Focusing on the evolution of feminism throughout the nineteenth and twentieth centuries, the archive provides materials on women's political activism, such as suffrage, birth control, pacifism, civil rights, and socialism, and on women's voices, from female-authored literature to women's periodicals. By providing the opportunity to witness female perspectives, Gale's *Women's Studies Archive* is an essential source for researchers working in Women's History, Gender Studies and Social History.

Link: <https://infotrac.gale.com/itweb/sndt>

2. SRELS Digital Archives for 54 years (1964-2017)

Contains archives in Library and Information Science Database.

E-BOOKS Subscribed (ID & Password Based)

Sr. No.	Publisher	Link
1	Pearson	library.in.pearson.com
2	S Chand	ebooks.schandgroup.com
3	Orient Blackswen	
4	CBS	https://www.eduport-global.com/
5	Arts & Science Pub(Aadi Publications, Anmol Publications Pvt. Ltd., Edukeen Publisher, ABD Publisher..etc)	www.asapglobe.com
6	T & F	
7	Elib4u (New Age, PHI Learning, Laxmi Publications)	https://digital.elib4u.com/
8	Himalaya Publishers	himalaya.ipublishcentral.com
9	Sage	Login to "SAGE e-vidya website"

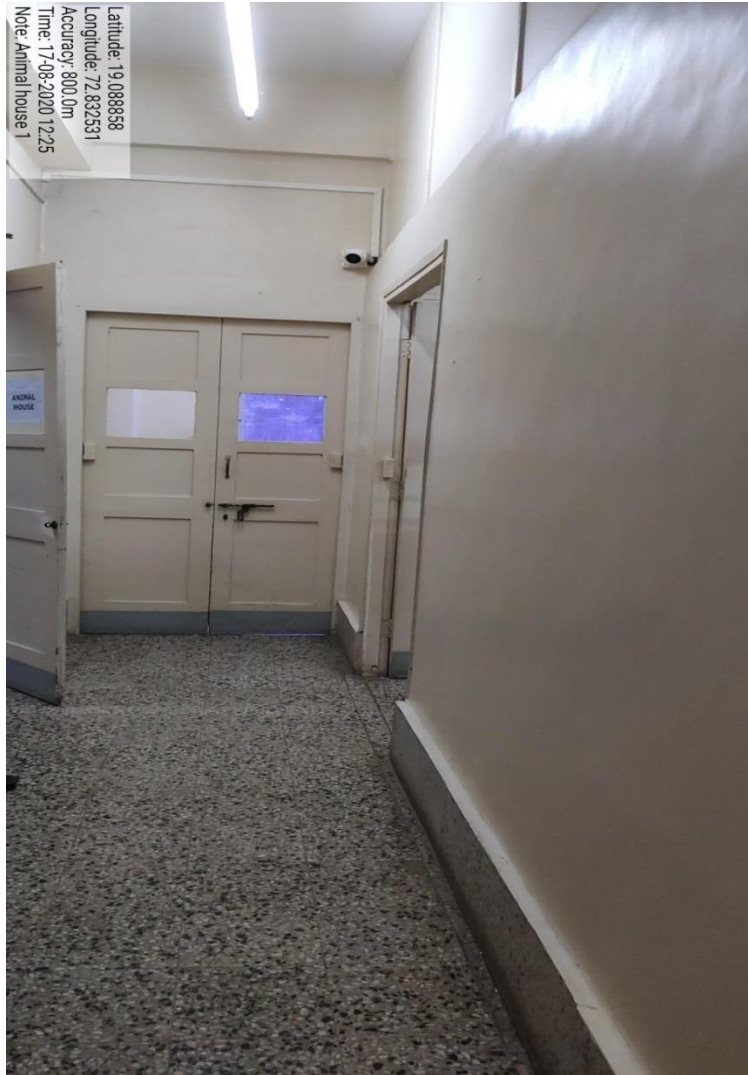
Moot Court, S.N.D.T Women's University

The moot court facility has been available at the S.N.D.T. Women's University Law School ever since the establishment of the Law School on 24th July, 2009. A moot court is a replica of real court proceedings. The purpose of moot court competitions is to make students aware of the court proceedings related to disputes between parties. Keeping this in mind, various moot court competitions have been held at the Law School at the International, National, State and College level. The students of the Law School participate in the moot court competitions as advocates representing their clients. Mooting assists law students by providing practical implications and knowledge that they would not find in books and would be unaware of.

Central Instrumentation Room, S.N.D.T Women's University



Animal House Facility at C. U. Shah College of Pharmacy, S.N.D.T Women's University





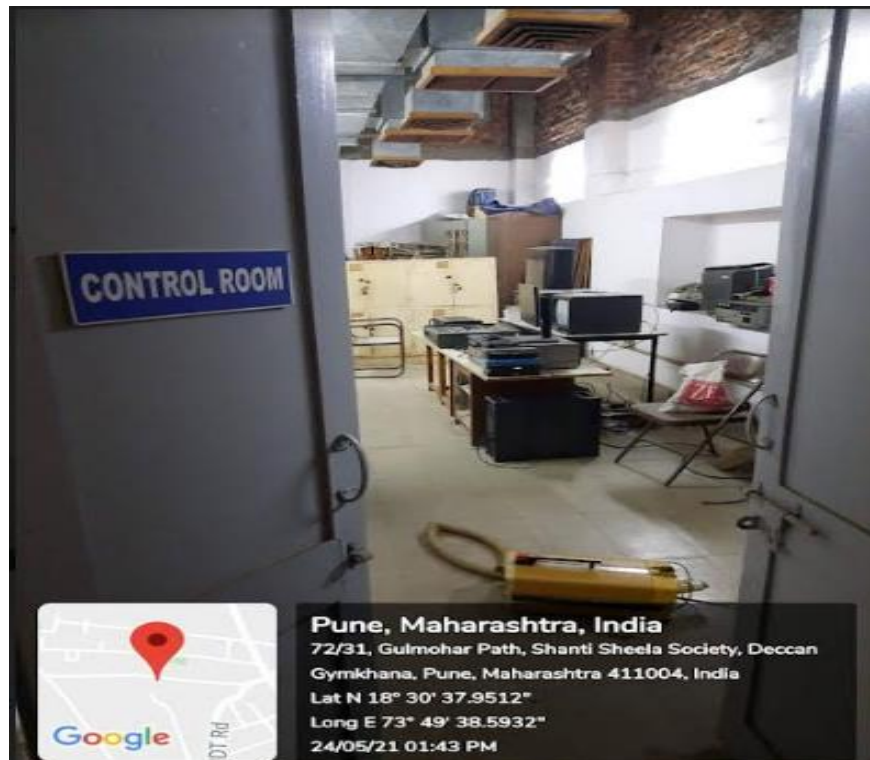


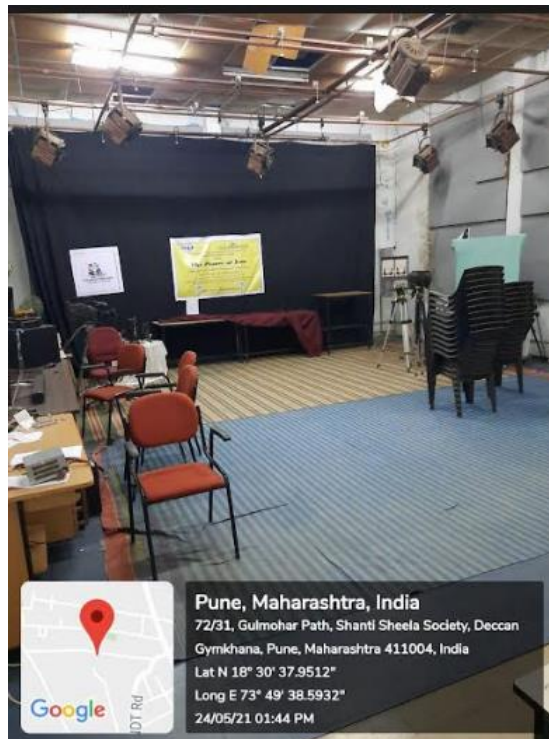
Latitude: 19.088858
Longitude: 72.832531
Accuracy: 800.0m
Time: 17-08-2020 12:29
Note: Animal house 7



Latitude: 19.088858
Longitude: 72.832531
Accuracy: 800.0m
Time: 17-08-2020 12:34
Note: Animal house 11

Media Laboratory/ Studio, S.N.D.T Women's University





Research and Statistical Database, S.N.D.T Women's University

BMK-Knowledge Resource Centre
Details of e-resources & databases





Moot Court, S.N.D.T Women's University

