

SNDT Women's University

Shreemati Nathibai Damodar Thackersey Women's University



NAAC -SSR

CRITERION I

Supporting Documents

for

**1.4.1.1: Feedback analysis report
submitted to appropriate
committee/bodies**

INDEX

Sr.No.	Content	Page No.
1.	Students' Feedback on Curriculum	3-11
2.	Teachers' Feedback on Curriculum	12-22
3.	Employers' Feedback on Curriculum	23-26
4.	Alumni Feedback on Curriculum	27-33

1. STAKEHOLDERS' FEEDBACK REPORT

The feedback on curriculum has been a routine practice of Internal Quality Assurance Cell (IQAC), S.N.D.T. Women's University, Mumbai. The feedback is the important component of any system for its improvement. The various stakeholders perceive the systems as per the experiences and reflect on the contribution of the system for the development of an individual in specific and society in general. Considering the importance of feedback in improvising the processes, the feedback on curriculum, its composition and the choices / experiences designed has been collected from students, teachers, employers and alumni through the structured questionnaires. This collected data is further analyzed to understand not only their perceptions about the curriculum but also to identify the gaps in their expectations from the various programs offered by the university and actual outcomes. This also helps in the revision of curriculum, to link with the industries and to bridge the gap between the economy and education.

2. STUDENTS FEEDBACK ON CURRICULUM

Students of today hold the key to the future of the country. Therefore, it is of utmost importance to directly involve students in order to understand their viewpoints on curricular experiences, its relevance and its role in enhancing the required knowledge-base and skills that fulfills the demands of the economy. Therefore, students' feedback on curriculum was thoroughly collected with the help of a structured questionnaire method. Feedback forms were made available in English and Marathi versions. This helped in understanding their views about the curricular experiences they have undergone and to take up their views ahead in the process of syllabus revision.

TABLE 1**LINK OF STUDENTS' FEEDBACK ON CURRICULUM**

Sr. No.	Academic Year	Total Respondents	Students' Feedback
1	2018-19	959	Well structured printed forms
2	2019-20	652	Well structured printed forms
3	2020-21	2002	https://forms.gle/Qy7F6wTiNcxthSth7
4	2021-22	1328	https://forms.gle/k3SCKDuqwaTRn6NF7
5	2022-23	1495	https://forms.gle/LgQHousAcY9vQZGv7

TABLE 2**STUDENTS' FEEDBACK FROM ACADEMIC YEAR 2018-19 TO 2022-23**

Sr. No.	Name of the Department and Institutions	Percentage of Respondents to total students				
		2018-19	2019-20	2020-21	2021-22	2022-23
1	C.U. Shah College of Pharmacy, Santacruz, Mumbai	34.44	9.41	63.69	50.26	63.98
2	Department of Commerce, Churchgate, Mumbai	33.33	22.22	55.36	25.81	56.41
3	Department of Commerce, Pune	27.50	22.22	56.90	16.30	90.74
4	Department of Communications and Media studies, Pune	58.82	46.67	89.66	50.00	80.00
5	Department of Computer Science, Santacruz, Mumbai	25.97	13.77	52.26	19.09	38.62
6	Department of Drawing and Painting, Churchgate, Mumbai	19.23	52.17	31.82	0.00	19.23
7	Department of Drawing and Painting, Pune	33.33	71.43	58.82	41.18	70.00
8	Department of Economics, Churchgate, Mumbai	32.35	12.12	45.54	41.59	49.53
9	Department of Economics, Pune	27.78	46.15	100.00	94.12	42.11
10	Department of Education Management, Santacruz, Mumbai	16.67	43.75	48.57	38.46	69.23

11	Department of Education, Churchgate, Mumbai	66.67	43.48	78.18	47.56	6.25
12	Department of Educational Technology, Juhu, Mumbai	36.36	36.36	37.04	60.87	54.55
13	Department of English, Churchgate, Mumbai	32.31	21.92	78.18	24.53	62.75
14	Department of Extension and Communication	38.46	26.67	53.85	29.73	25.93
15	Department of Food Science and Nutrition, Juhu, Mumbai	31.63	37.01	44.86	0.98	53.54
16	Department of Geography, Pune	32.26	34.48	70.27	69.70	84.00
17	Department of Gujrati, Churchgate, Mumbai	36.84	50.00	96.15	70.59	66.67
18	Department of Hindi, Churchgate, Mumbai	33.33	42.11	68.75	53.13	40.00
19	Department of Hindi, Pune	33.33	42.11	86.67	47.37	100.00
20	Department of History, Churchgate, Mumbai	41.38	28.57	77.19	54.72	81.82
21	Department of Human Development, Juhu, Mumbai	36.00	34.62	82.76	14.71	82.98
22	Department of Lifelong Learning and Extension, Mumbai	31.82	46.67	41.67	90.91	1.82
23	Department of Marathi, Churchgate, Mumbai	50.00	37.93	58.62	42.86	70.59
24	Department of Marathi, Pune	62.5	58.33	43.75	26.32	86.96
25	Department of Music, Churchgate, Mumbai	50.00	46.15	71.15	0.00	19.51
26	Department of Music, Pune	47.50	61.36	69.23	100.00	97.96
27	Department of Political Science, Churchgate, Mumbai	53.13	19.44	86.49	14.63	57.58
28	Department of Psychology, Churchgate, Mumbai	26.80	10.83	32.67	0.66	44.67
29	Department of Psychology, Pune	27.27	38.64	53.33	17.78	91.11
30	Department of Resource Management, Juhu, Mumbai	41.18	50.00	63.16	61.54	88.89
31	Department of Sanskrit, Churchgate, Mumbai	53.85	47.83	46.43	0.00	80.95
32	Department of Social Work, Churchgate, Mumbai	39.34	24.36	20.31	37.31	16.25

33	Department of Sociology, Churchgate, Mumbai	58.00	20.63	85.07	9.68	56.86
34	Department of Special Education, Santacruz, Mumbai	50.00	20.41	71.08	37.76	11.29
35	Department of Textile Science and Apparel Design, Juhu, Mumbai	67.74	28.21	93.18	17.39	55.17
36	Jankidevi Bajaj Institute of Management Studies, Pune	00.00	36.84	39.39	14.55	8.14
37	Jankidevi Bajaj Institute of Management Studies, Santacruz, Mumbai	26.97	35.14	44.68	5.49	43.93
38	Law School, Santacruz, Mumbai	15.88	6.08	44.97	29.06	20.13
39	Leelabai Thackersey College of Nursing, Churchgate, Mumbai	12.69	9.36	51.58	61.50	12.89
40	Maharshi Karve Model College for Women, Shrivardhan	29.81	26.25	63.16	4.41	42.65
41	Research Centre for Women's Studies, Juhu, Mumbai	31.25	31.25	60.00	61.54	66.67
42	S.H.P.T. College of Science, Santacruz, Mumbai	34.07	19.15	34.41	42.27	44.12
43	S.H.P.T. School of Library Science, Churchgate, Mumbai	43.48	37.04	52.00	61.11	61.54
44	SNDTWU Centre for Vocational and Technical Education, Santacruz	33.81	7.25	38.48	39.00	56.70
45	Usha Mittal Institute of Technology, Santacruz, Mumbai	12.98	2.58	34.84	21.78	16.41

2.1 ANALYSIS OF STUDENTS' FEEDBACK (Academic Year 2018-19 to 2022-23)

The data has been collected from students enrolled for various programs with SNDT Women's University and analysed in a systematic manner. The rating points from strongly disagree to strongly agree are classified into five categories namely Poor, Average, Good, Very Good and Excellent for further understanding of students' views.

Analysis of feedback received from students of different departments during the academic year 2018-19 to 2022-23 is presented in table 3 and is also graphically represented in the figure numbers 1 to 5.

TABLE 3
STUDENTS' FEEDBACK ANALYSIS
(ACADEMIC YEAR 2018-19 TO 2022-23)

Year	Questions Rating	Q1	Q2	Q3	Q4	Q5	Q6	Q7	Q8
2018-19	Poor	3.86	4.69	2.61	3.44	5.42	3.65	3.34	3.55
	Average	9.91	7.40	7.40	8.65	7.30	8.34	8.34	5.11
	Good	30.03	29.20	25.86	28.15	24.71	30.55	25.65	25.65
	Very Good	35.77	38.58	37.12	37.85	44.11	39.71	39.94	40.88
	Excellent	20.44	20.13	27.0	21.90	18.46	17.73	22.73	24.82
2019-20	Poor	4.91	5.83	2.91	3.83	5.98	4.75	3.22	3.83
	Average	7.82	7.67	7.21	8.13	6.75	7.36	8.59	5.67
	Good	27.30	26.23	23.16	24.85	20.71	27.30	22.70	22.24
	Very Good	36.66	37.12	36.96	38.96	47.24	41.10	40.64	41.87
	Excellent	23.31	23.16	29.75	24.23	19.33	19.48	24.85	26.38
2020-21	Poor	2.35	3.69	1.55	2.49	6.33	3.44	2.88	2.84
	Average	4.24	7.09	3.74	6.98	6.83	7.24	5.79	4.89
	Good	21.36	22.11	14.07	20.35	20.95	24.65	19.86	15.82
	Very Good	35.53	32.63	31.49	33.62	29.28	30.34	33.83	29.24
	Excellent	36.53	34.48	49.15	36.56	36.61	34.33	37.67	47.21
2021-22	Poor	7.0	8.13	5.95	6.63	11.52	8.13	5.65	6.25
	Average	7.68	11.67	6.55	9.49	9.41	10.09	10.17	6.40
	Good	23.27	24.70	18.07	24.62	24.62	29.22	22.59	20.56
	Very Good	31.55	29.89	31.63	29.82	28.09	26.66	31.93	32.53
	Excellent	30.50	25.60	37.80	29.44	26.36	25.90	29.67	34.26
2022-23	Poor	5.28	7.51	2.54	6.1	4.88	3.88	3.28	3.55
	Average	10.21	10.33	7.29	13.03	8.29	10.97	8.96	6.29
	Good	27.11	26.76	22.54	24.65	24.68	31.04	23.75	24.48
	Very Good	29.58	32.28	36.19	30.75	41.00	36.92	40.87	41.67
	Excellent	27.82	23.12	31.44	25.47	21.14	17.19	23.14	24.01

FIGURE 1: STUDENTS' FEEDBACK FOR THE ACADEMIC YEAR 2018-19

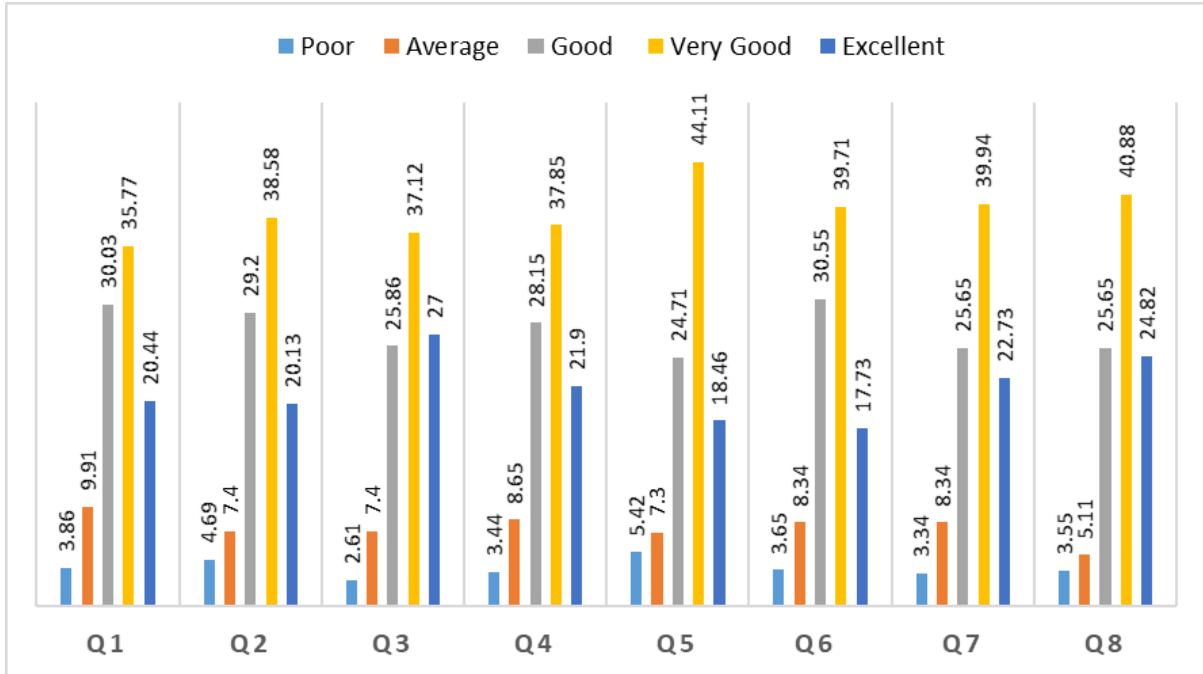


FIGURE 2: STUDENTS' FEEDBACK FOR THE ACADEMIC YEAR 2019-20

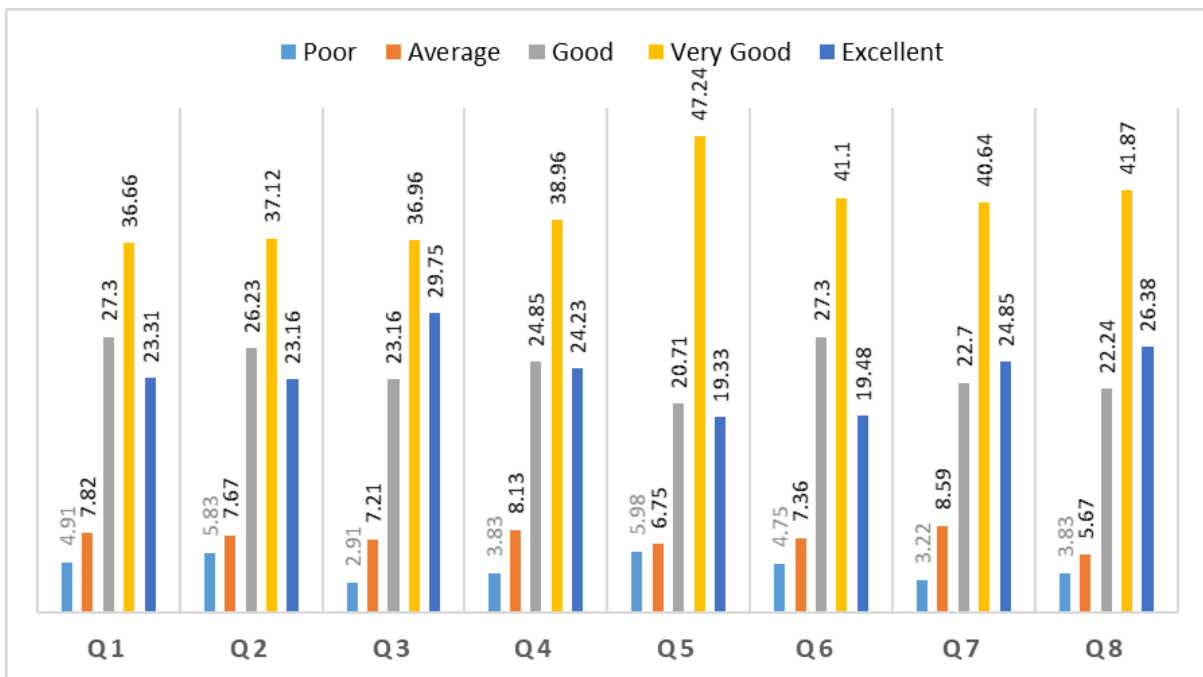


FIGURE 3: STUDENTS' FEEDBACK FOR THE ACADEMIC YEAR 2020-21

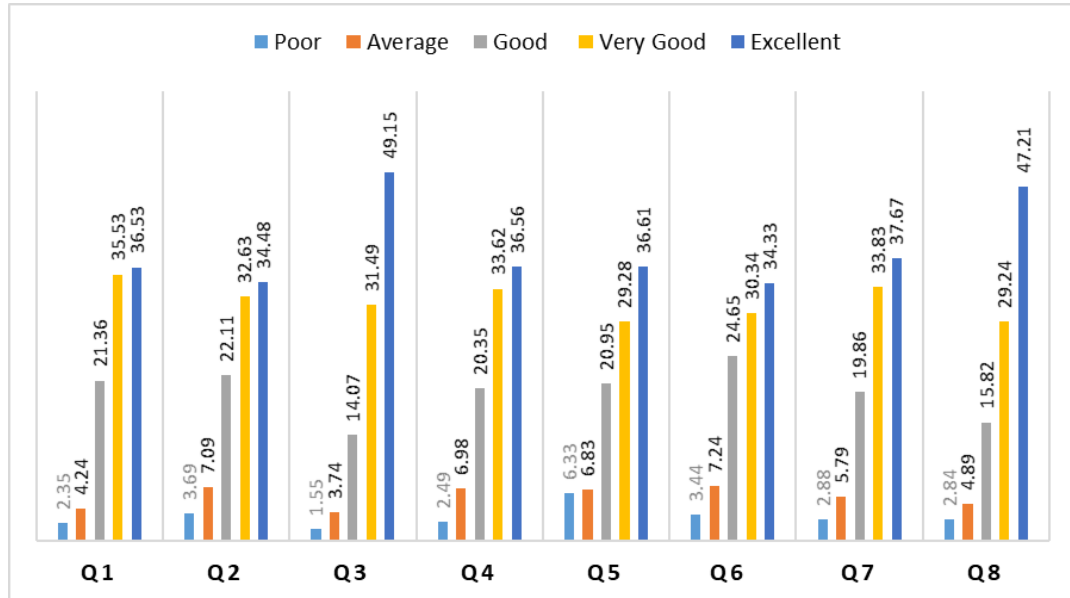


FIGURE 4: STUDENTS' FEEDBACK FOR THE ACADEMIC YEAR 2021-22

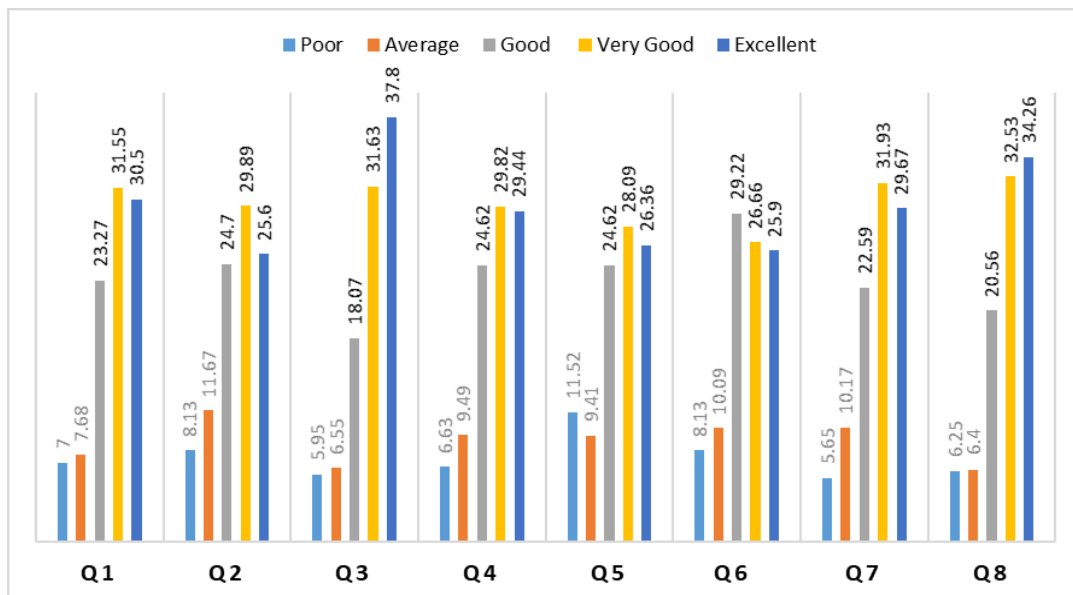


FIGURE 5: STUDENTS' FEEDBACK FOR THE ACADEMIC YEAR 2022-23

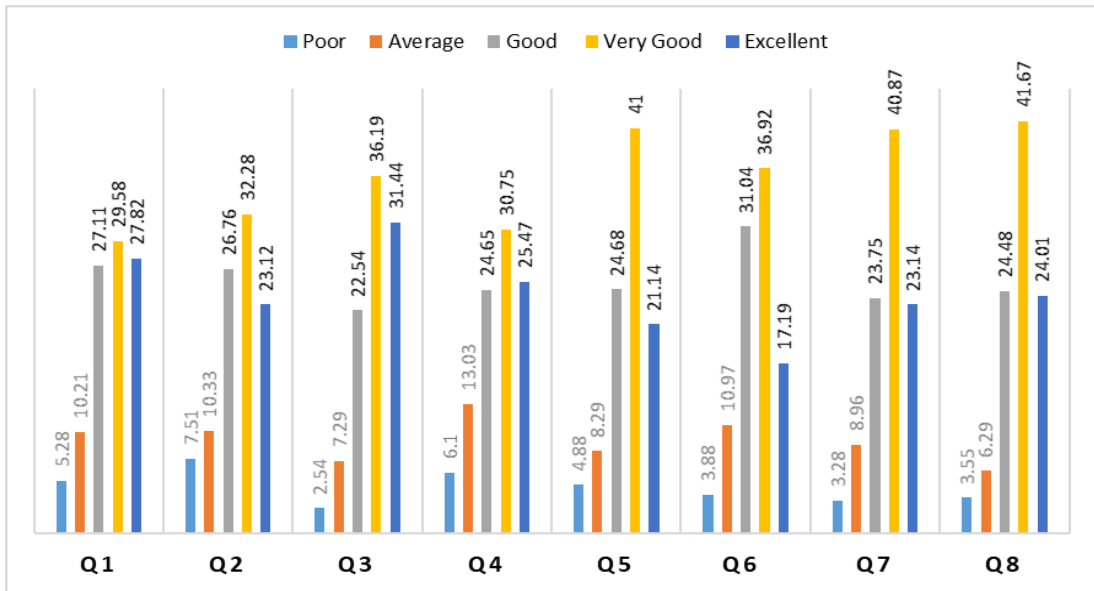


Table 3 indicates that more than 50% students from the 2018-19 batch expressed that the curriculum is well organized and easy to follow, develop knowledge base, build confidence for task completion, develop skills for getting jobs and skills to work as professionals.

In the academic year 2019-20, 65% students perceive that the syllabus helps in creating a strong knowledge base and the syllabus helps to acquire all required skills to work as professionals. 68% students believe that the curriculum designed develops confidence to complete tasks independently and 60% students mentioned that the syllabus provides sufficient choices in selecting courses. 63% students opine that the syllabus focuses on employability skills.

81% opined that the curriculum helps in developing a strong knowledge base. 76% of students from 2020-21 found that the syllabus develops confidence to complete tasks, 72 percent perceives that the curriculum is well organized and develops all required skills to work as a professional. 65 % students express that they have enough choices in selecting the courses. On the other hand, only 65% believe that the curriculum helps in developing entrepreneurship skills, skills required for getting jobs.

It is seen from the table that 69% students from 2021-22 strongly agree on the contribution of the curriculum in developing a strong knowledge base and only 67% mention that the curriculum develops confidence to complete tasks independently. More than 60 % students from 2022-23 batch indicated that the curriculum develops knowledge base, builds confidence for task completion and develops skills for getting jobs.

3. TEACHERS' FEEDBACK ON CURRICULUM

Teacher is the key component in designing and implementing curriculum. Feedbacks of Teachers on curriculum design and reframe are collected through the well-structured printed form and google form during the period 2018-19 to 2022-23 from all university departments which includes a detailed analysis of responses to individual questions. A Likert scale ranging from 1 represents 'Strongly Disagree', 2 represents 'Disagree', 3 represents 'Neutral', 4 represents 'Agree' and 5 indicates 'Strongly Agree'. The teachers' extent of agreement on the process of curriculum revision is reflected in table no. 5 to 9.

TABLE 4

TEACHERS' FEEDBACK ON CURRICULUM (2018-19 TO 2022-23)

Sr. No.	Academic Year	Total Respondents	Link of Teachers' Feedback
1	2018-19	92	Well Structured Printed Form
2	2019-20	69	Well Structured Printed Form
3	2020-21	170	https://forms.gle/4P5W6Zzt7bBWqqNw6
4	2021-22	224	https://forms.gle/iuejbGQnvj8Gc8aRA
5	2022-23	195	https://forms.gle/R53DK7ytPbAaDB9F7

3.1. ANALYSIS OF TEACHERS' FEEDBACK

TABLE 5

TEACHERS' FEEDBACK FOR THE YEAR 2018-19

Q. No.	Questions	Respondents	Rating				
			1	2	3	4	5
2	The curriculum of your Department has been updated from time to time.	Count	20	13	16	26	17
		Percent	21.74	14.13	17.39	28.26	18.48
3	I am given enough freedom to contribute my ideas on curriculum design and development.	Count	14	20	22	19	17
		Percent	15.22	21.17	23.91	20.65	18.48
4		Count	7	19	25	28	13

	Board of Studies (BOS) ensures that up to date and the relevant courses are being offered.	Percent	7.61	20.65	27.17	30.43	14.13
5	Representation from the corporate / Industry sector in BOS is helpful in designing and improving the courses.	Count	11	13	7	42	19
		Percent	11.96	14.13	7.61	45.65	20.65
6	Employability & Cross-cutting issues (Professional Ethics, Gender, Human Values, Environment and Sustainability) are reflected in the curriculum.	Count	8	14	29	27	14
		Percent	8.70	15.22	31.52	29.35	15.22
7	Adequate Infrastructure is available in the University for the Curriculum transactions in different modes (face to face/blended/online).	Count	12	22	35	09	14.0
		Percent	13.04	23.91	38.04	9.78	15.22
8	The System followed by the University for the design and development of the curriculum is effective.	Count	00	03	06	31	52
		Percent	00	3.26	6.52	33.70	56.52
9	Faculty Orientations programs for the introduction of the new Syllabus are organized.	Count	04	03	13	42	30
		Percent	4.35	3.26	14.13	45.65	32.61
10	The books/journals etc. Prescribed/ listed as reference materials in the new syllabus are available in the library.	Count	13	25	23	15	16
		Percent	14.13	27.17	25.00	16.30	17.39
11	Freedom is given in adopting new techniques/ strategies of testing and assessment of students.	Count	09	11	12	41	19
		Percent	9.78	11.96	13.04	44.57	20.65

TABLE 6

TEACHERS' FEEDBACK FOR THE YEAR 2019-20

Q. No.	Questions	Respondents	Academic Year 2019-20				
			1	2	3	4	5
2	The curriculum of your Department has been updated from time to time.	Count	01	01	05	11	51
		Percent	1.45	1.45	7.25	15.94	73.91
3	I am given enough freedom to contribute my ideas on curriculum design and development.	Count	03	01	04	11	50
		Percent	4.35	1.45	5.80	15.94	72.46
4		Count	00	01	06	16	46

	Board of Studies (BOS) ensures that up to date and the relevant courses are being offered.	Percent	00	1.45	8.70	23.19	66.67
5	Representation from the corporate / Industry sector in BOS is helpful in designing and improving the courses.	Count	01	00	08	23	37
		Percent	1.45	00	11.59	33.33	53.62
6	Employability & Cross-cutting issues (Professional Ethics, Gender, Human Values, Environment and Sustainability) are reflected in the curriculum.	Count	01	01	06	22	39
		Percent	1.45	1.45	8.70	31.88	56.52
7	Adequate Infrastructure is available in the University for the Curriculum transactions in different modes (face to face/blended/online).	Count	02	01	23	12	31
		Percent	2.9	1.45	33.33	17.39	44.93
8	The System followed by the University for the design and development of the curriculum is effective.	Count	01	01	09	19	39
		Percent	1.45	1.45	13.04	27.54	56.52
9	Faculty Orientations programs for the introduction of the new Syllabus are organized.	Count	04	08	19	19	19
		Percent	5.80	11.59	27.54	27.54	27.54
10	The books/journals etc. Prescribed/ listed as reference materials in the new syllabus are available in the library.	Count	01	01	06	34	27
		Percent	1.45	1.45	8.70	49.28	39.13
11	Freedom is given in adopting new techniques/ strategies of testing and assessment of students.	Count	01	00	044	12	52
		Percent	1.45	00	5.80	17.39	75.36

TABLE 7
TEACHERS' FEEDBACK FOR THE YEAR 2020-21

Q. No.	Questions	Respondents	Rating				
			1	2	3	4	5
2.	The curriculum of your Department has been updated from time to time.	Count	5	4	11	44	106
		Percent	2.94	2.35	6.47	25.88	62.35
3.	I am given enough freedom to contribute my ideas on curriculum design and development.	Count	04	08	13	30	115
		Percent	2.35	4.71	7.65	17.65	67.65

4.	Board of Studies (BOS) ensures that up to date and the relevant courses are being offered.	Count	01	06	11	42	110
		Percent	0.59	3.53	6.47	24.71	64.71
5.	Representation from the corporate / Industry sector in BOS is helpful in designing and improving the courses.	Count	03	03	19	55	90
		Percent	1.76	1.76	11.18	32.35	52.94
6.	Employability & Cross-cutting issues (Professional Ethics, Gender, Human Values, Environment and Sustainability) are reflected in the curriculum.	Count	1	4	16	42	107
		Percent	0.59	2.35	9.41	24.71	62.94
7.	Adequate Infrastructure is available in the University for the Curriculum transactions in different modes (face to face/blended/online).	Count	05	12	35	55	63
		Percent	2.94	7.06	20.59	32.35	37.06
8.	The System followed by the University for the design and development of the curriculum is effective.	Count	02	02	15	50	101
		Percent	1.18	1.18	8.82	29.41	59.41
9.	Faculty Orientations programs for the introduction of the new Syllabus are organized.	Count	11	11	31	55	62
		Percent	6.47	6.47	18.24	32.35	36.47
10.	The books/journals etc. Prescribed/ listed as reference materials in the new syllabus are available in the library.	Count	02	06	20	68	74
		Percent	1.18	3.53	11.76	40.0	43.53
11.	Freedom is given in adopting new techniques/ strategies of testing and assessment of students.	Count	05	00	12	29	124
		Percent	2.94	00	7.06	17.06	72.94

TABLE 8
TEACHERS' FEEDBACK FOR THE YEAR 2021-22

Q. No.	Questions	Respondents	Rating				
			1	2	3	4	5
2.	The curriculum of your Department has been updated from time to time.	Count	7	8	37	49	123
		Percent	3.11	3.56	16.44	21.78	55.11
3.	I am given enough freedom to contribute my ideas on curriculum design and development.	Count	13	3	18	43	147
		Percent	5.78	1.33	8.00	19.11	65.78

4.	Board of Studies (BOS) ensures that up to date and the relevant courses are being offered.	Count	7	8	26	50	133
		Percent	3.11	3.56	11.56	22.22	59.56
5.	Representation from the corporate / Industry sector in BOS is helpful in designing and improving the courses.	Count	4	9	36	60	116
		Percent	1.78	4.00	16.0	26.67	51.56
6.	Employability & Cross-cutting issues (Professional Ethics, Gender, Human Values, Environment and Sustainability) are reflected in the curriculum.	Count	5	7	31	68	114
		Percent	2.22	3.11	13.78	30.22	50.67
7.	Adequate Infrastructure is available in the University for the Curriculum transactions in different modes (face to face/blended/online).	Count	8	24	42	71	80
		Percent	3.56	10.67	18.67	31.56	35.56
8.	The System followed by the University for the design and development of the curriculum is effective.	Count	4	17	37	56	111
		Percent	1.78	7.56	16.44	24.89	49.33
9.	Faculty Orientations programs for the introduction of the new Syllabus are organized.	Count	9	20	52	61	83
		Percent	4.0	8.89	23.11	27.11	36.89
10.	The books/journals etc. Prescribed/ listed as reference materials in the new syllabus are available in the library.	Count	8	10	31	82	94
		Percent	3.56	4.44	13.78	36.44	41.78
11.	Freedom is given in adopting new techniques/ strategies of testing and assessment of students.	Count	4	5	23	40	152
		Percent	1.79	2.23	10.27	17.86	67.86

TABLE 9
TEACHERS' FEEDBACK FOR THE YEAR 2022-23

Q. No.	Questions	Respondents	Rating				
			1	2	3	4	5
2.	The curriculum of your Department has been updated from time to time.	Count	9	3	21	63	99
		Percent	4.62	1.54	10.77	32.31	50.77
3.	I am given enough freedom to contribute my ideas on curriculum design and development.	Count	07	07	16	49	116
		Percent	3.59	3.59	8.21	25.13	59.49

4.	Board of Studies (BOS) ensures that up to date and the relevant courses are being offered.	Count	04	06	15	63	107
		Percent	2.05	3.08	7.69	32.31	54.87
5.	Representation from the corporate / Industry sector in BOS is helpful in designing and improving the courses.	Count	03	13	25	60	94
		Percent	1.54	6.67	12.82	30.77	48.21
6.	Employability & Cross-cutting issues (Professional Ethics, Gender, Human Values, Environment and Sustainability) are reflected in the curriculum.	Count	5	5	18	74	93
		Percent	2.56	2.56	9.23	37.95	47.69
7.	Adequate Infrastructure is available in the University for the Curriculum transactions in different modes (face to face/blended/online).	Count	05	07	28	72	83
		Percent	2.56	3.59	14.36	36.92	42.56
8..	The System followed by the University for the design and development of the curriculum is effective.	Count	03	04	25	68	95
		Percent	1.54	2.05	12.82	34.87	48.72
9	Faculty Orientations programs for the introduction of the new Syllabus are organized.	Count	13	11	37	74	60
		Percent	6.67	5.64	18.97	37.95	30.77
10.	The books/journals etc. Prescribed/ listed as reference materials in the new syllabus are available in the library.	Count	05	08	18	77	84
		Percent	2.56	4.10	9.23	39.49	44.62
11.	Freedom is given in adopting new techniques/ strategies of testing and assessment of students.	Count	05	05	11	54	120
		Percent	2.56	2.56	5.64	27.69	61.54

(Likert scale '1' denoting 'Strongly Disagree' and '5' denoting 'Strongly Agree')

3.2. TEACHERS' FEEDBACK GRAPHICAL PRESENTATION

FIGURE 6 :TEACHERS' FEEDBACK IN THE ACADEMIC YEAR 2018-19

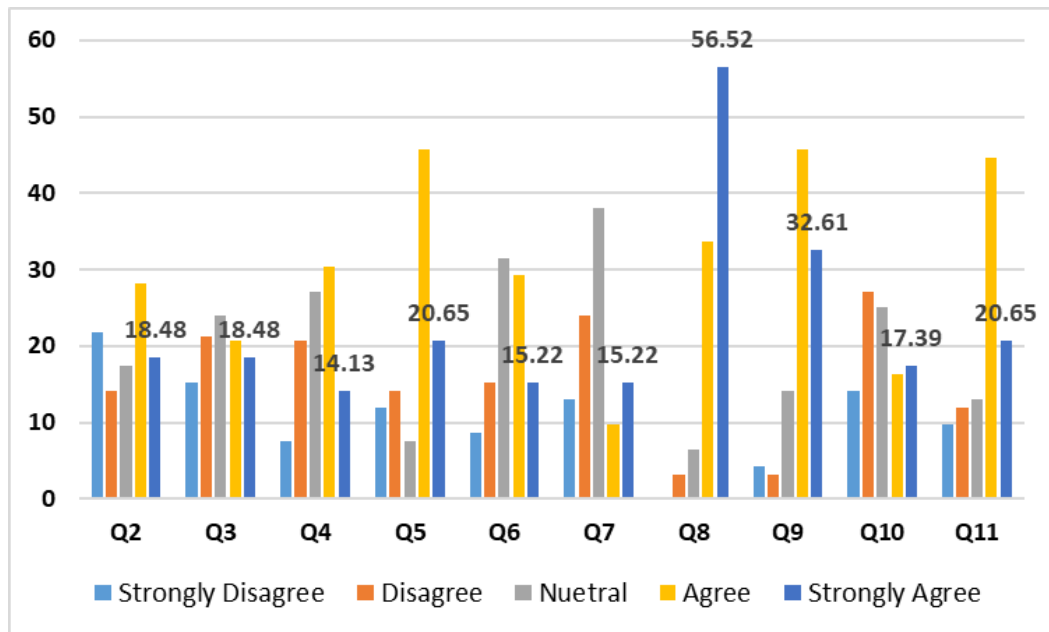


FIGURE 7 :TEACHERS' FEEDBACK IN THE ACADEMIC YEAR 2019-20

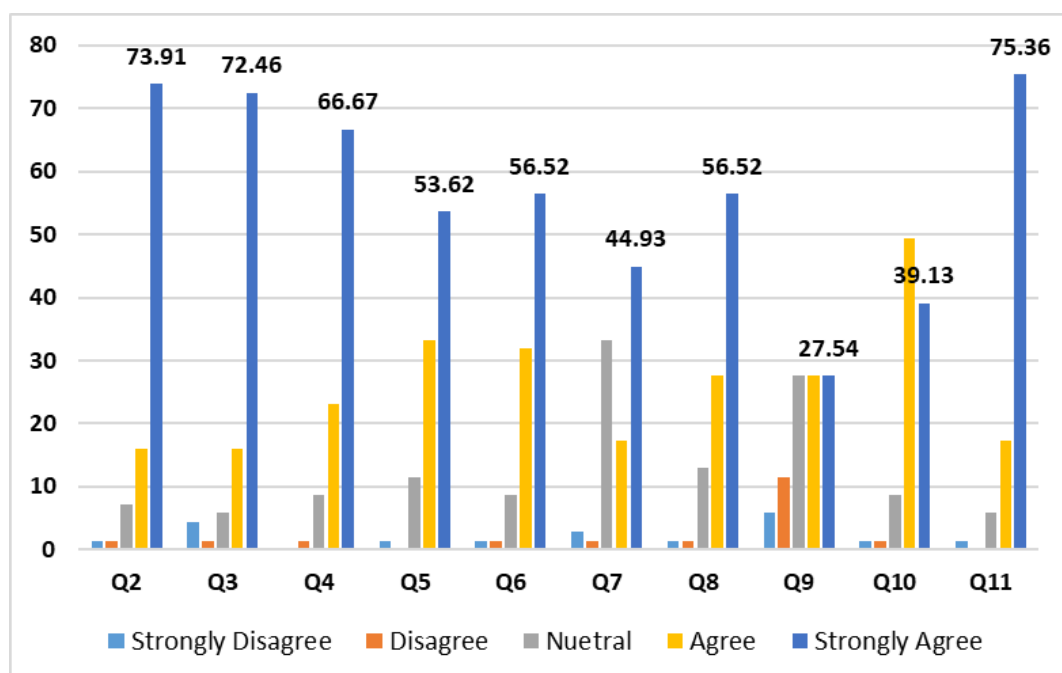


FIGURE 7 :TEACHERS' FEEDBACK IN THE ACADEMIC YEAR 2020-21

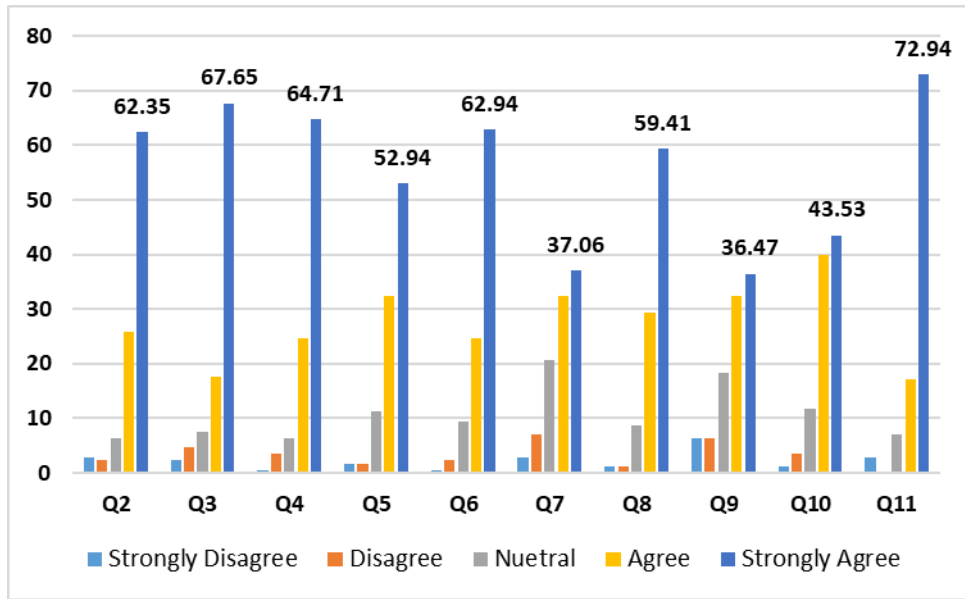


FIGURE 8 :TEACHERS' FEEDBACK IN ACADEMIC YEAR 2021-22

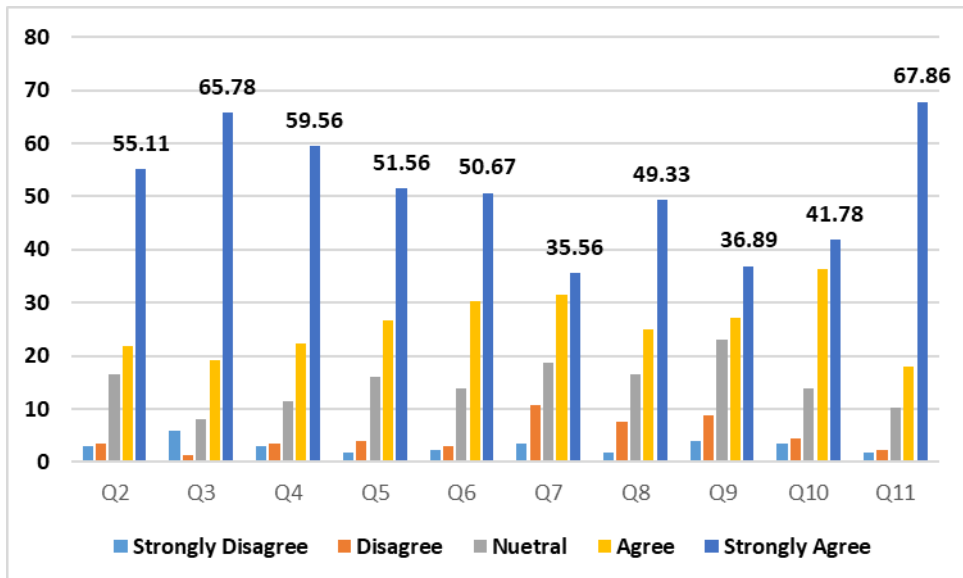
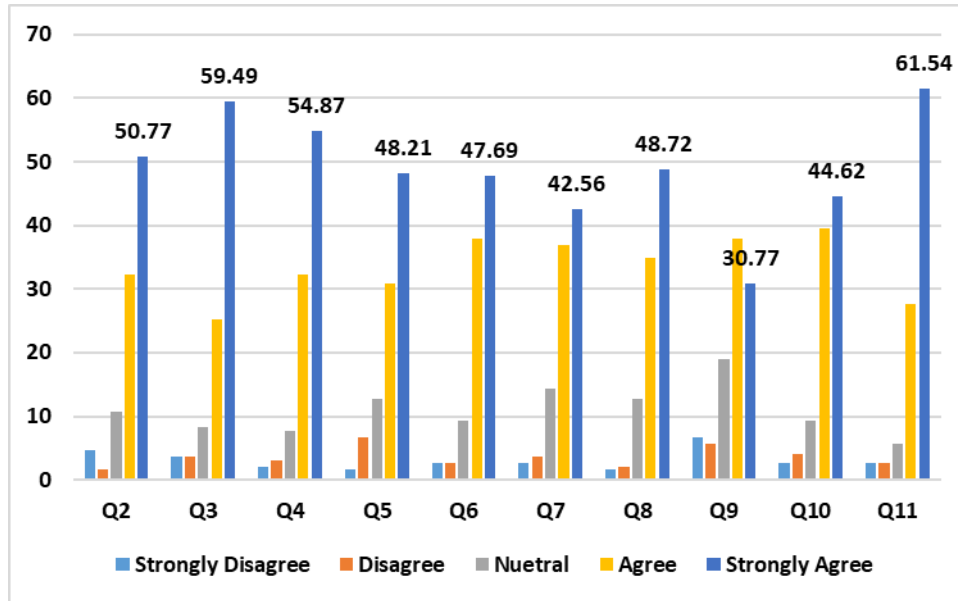


FIGURE 9 :TEACHERS FEEDBACK IN ACADEMIC YEAR 2022-23



The analyzed data indicated that the teachers' views on the process of syllabus revision and the spaces created for their contribution in the process of syllabus revision. It is seen that the process of syllabus revision is as per the university act and the teachers can contribute their ideas in framing the syllabus. The board of studies, board of deans ensures the processes of syllabus framing, revision is taken place in a prescribed manner. The members of BOS and committee members of autonomy are reflected in the context of various techniques and strategies and their ideas are also taken into consideration while designing curriculum. They expect that the orientation programs must be organized for teachers to discuss the new changes as they have to transact the curriculum. Different strategies and their innovative suggestions are also taken into account while developing and designing the curriculum.

In 2018-19, Approximately 90 percent respondents agree that the system followed by the university for the designs and development of the curriculum is effective. More than 65 percent of respondents express that the representation from the corporate or industry sector in BoS has been helpful in designing and improving

the courses and faculty orientation programmes are well organized. 65 percent of respondents agree that there is freedom in adopting new techniques or strategies of testing and assessment.

According to the teachers feedback analysis of 2019-20, approximately 80 percent respondent strongly agrees that the curriculum has been updated from time to time. More than 70 percent respondents strongly agree that they have been given Freedom for adopting new techniques/ strategies of testing and assessment of students, also enough freedom to contribute ideas on curriculum designs and development, and BoS ensures that upto-date and relevant courses are offered. In terms of the organization of faculty orientation programs for the introduction of new syllabus, less than 30 percent of respondents strongly agree.

As per the teachers' feedback of 2020-21, it is observed that approximately 85 percent of respondents strongly agree that they have been given Freedom for adopting new techniques/ strategies of testing and assessment of students. It is observed that the teacher strongly agrees more than 80 percent regarding all the questions except Q7 and Q9.

The teachers' data of 2021-22 indicates that the majority of teachers (86 %) agree that enough freedom is provided in contributing their ideas in curriculum design & development. More than 80 % teachers think that the employability & Cross-cutting issues (Professional Ethics, Gender, Human Values, Environment and Sustainability) are reflected in the curriculum and the related books/journals etc. As per 77 percent teachers respondents expressed that the curriculum of the Department has been updated from time to time.

There are 75 % teachers who believe that the system followed by the University for the design and development of the curriculum is effective. However, 67% teachers mentioned that there is a need for the adequate Infrastructure for the Curriculum transactions in different modes (face to face/blended/online). 63 percent of Faculty members expressed that the organization of orientations

programs for the introduction of the new Syllabus is the requirement in this academic year.

As per the feedback analysis of 2022-23, 80 to 90 percent of teachers agree with all the feedback questions except Q9 about the faculty orientation programmes that are organized for introduction of new syllabus.

4. EMPLOYERS FEEDBACK ON CURRICULUM

The analysis of employers' feedback has been assessed on the basis of total responses of employers from the Academic Year 2018-19 to 2022-23. All responses were collected with the help of a well-structured questionnaire. These responses were analyzed in the context of the status of Theoretical knowledge, its application, Ability to work in a team, Creativity, Willingness to learn new skills, Sincerity and Integrity etc. Four-point rating scale has been used in which '1' denotes 'Average' and '4' denotes 'Excellent' which is shown in the following table.

4.2. EMPLOYERS FEEDBACK ANALYSIS FROM 2018-19 TO 2022-23

TABLE 10 :_Employers Feedback

Academic Year 2018-19				
Sr. No.	Particulars	Average	Good	Excellent
Q2.a	Theoretical knowledge	8.92	36.94	54.14
Q2.b	Application of knowledge	6.37	42.67	50.96
Q2.c	Ability to work in a team	5.10	36.3	58.60
Q2.d	Creativity	7.64	42.04	50.32
Q2.e	Willingness to learn new skill	9.38	37.12	53.50
Q2.f	Sincerity	5.10	30.58	64.33
Q2.g	Integrity	5.10	35.67	59.24
Academic Year 2019-20				
Sr. No.	Particulars	Average	Good	Excellent
Q2.a	Theoretical knowledge	4.92	42.62	52.46
Q2.b	Application of knowledge	1.64	39.35	59.02
Q2.c	Ability to work in a team	8.20	39.34	52.46
Q2.d	Creativity	1.64	31.14	67.21
Q2.e	Willingness to learn new skill	4.92	31.15	63.93
Q2.f	Sincerity	3.28	34.42	62.30
Q2.g	Integrity	4.92	42.62	52.46
Academic Year 2021-22				
Sr. No.	Particulars	Average	Good	Excellent
Q2.a	Theoretical knowledge	8.22	30.14	61.64
Q2.b	Application of knowledge	6.85	34.25	58.90
Q2.c	Ability to work in a team	10.96	28.77	60.27
Q2.d	Creativity	15.07	43.84	41.10

Q2.e	Willingness to learn new skill	6.85	46.58	46.58
Q2.f	Sincerity	6.85	47.95	45.21
Q2.g	Integrity	5.48	32.88	61.64
Academic Year 2022-23				
Sr. No.	Particulars	Average	Good	Excellent
Q2.a	Theoretical knowledge	7.35	30.88	61.76
Q2.b	Application of knowledge	10.29	26.47	63.24
Q2.c	Ability to work in a team	8.82	35.29	55.88
Q2.d	Creativity	10.29	30.88	58.82
Q2.e	Willingness to learn new skill	10.29	39.71	50.00
Q2.f	Sincerity	5.88	33.82	60.29
Q2.g	Integrity	7.35	26.47	66.18

FIGURE 11 : EMPLOYERS FEEDBACK IN ACADEMIC YEAR 2018-19

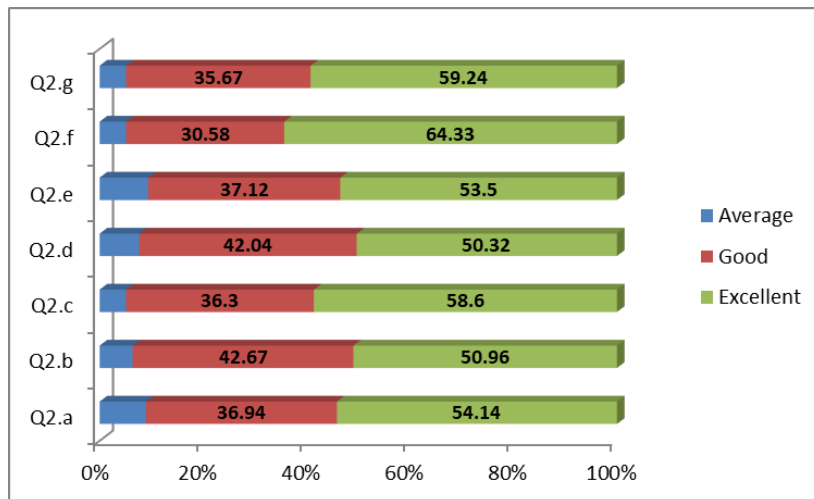


FIGURE 11 : EMPLOYERS FEEDBACK IN ACADEMIC YEAR 2019-20

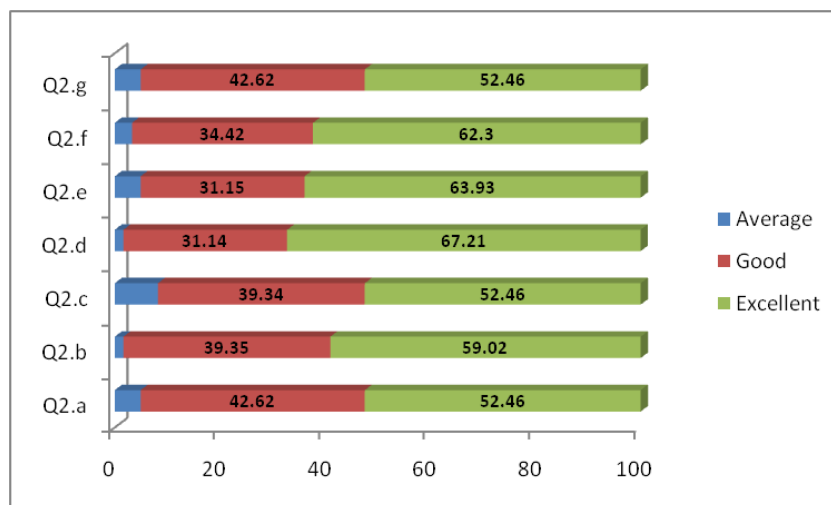


FIGURE 12 : EMPLOYERS FEEDBACK IN ACADEMIC YEAR 2021-22

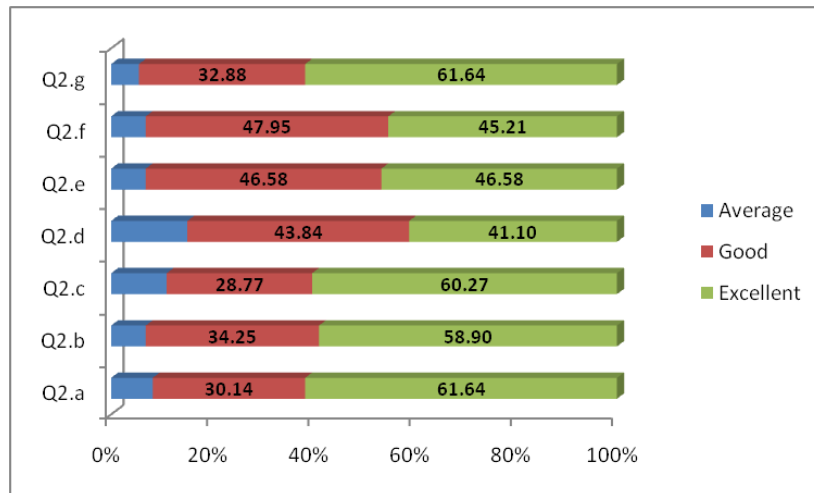
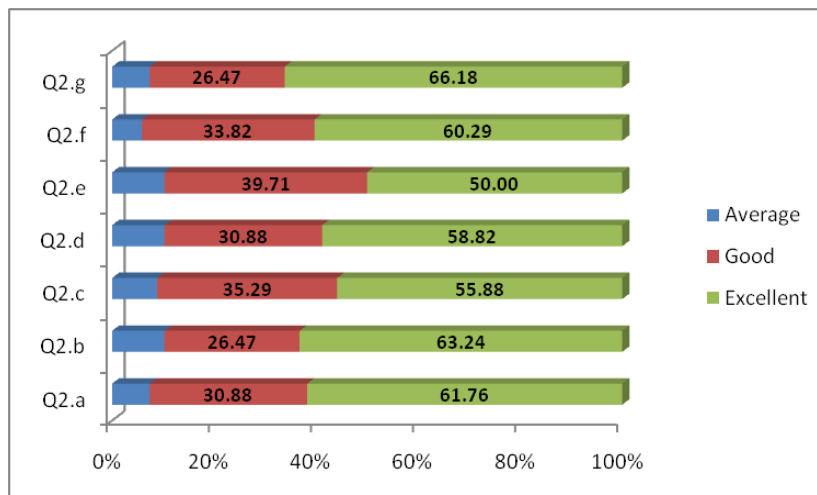


FIGURE 13: EMPLOYERS FEEDBACK IN ACADEMIC YEAR 2022-23



In the academic year 2018-19, according to employers feedback, our students demonstrated 50 to 60 percent in terms of theoretical knowledge, application knowledge, ability to work in a team, Integrity among the students, creativity and willingness to learn new skills whereas the percentage of sincerity of the students was above 60 percent. In 2019-20, the percentage of creativity, willingness to learn new skills and sincerity of the students was greater than 60 percent.

The academic year 2021-22 was the Pandemic period so that the Creativity, Willingness to learn new skill, Sincerity and integrity among the students measured below 50 percent and at the same time more than 60 percent employers expressed

that the alumni had more than 60 percent students had the ability to work in a team, integrity and theoretical knowledge the percentage. Theoretical knowledge, application of knowledge, sincerity and integrity were observed between 60 to 70 percent whereas the ability to work, creativity and willingness to learn new skills remained between 50 to 60 percent among the students.

5. ALUMNI FEEDBACK

Alumni Feedback was gathered with the help of well-structured printed questionnaires in the 2018-19, -2019-20 , 2020-21 academic year whereas the google forms were applied during the academic year 2021-22 and 2022-23.

TABLE 11

LINK OF ALUMNI FEEDBACK ON CURRICULUM

Sr. No	Academic Year	No of Respondents	Alumni Feedback
1	2018-19	366	Well-structured printed forms
2	2019-20	358	Well-structured printed forms
3	2020-21	380	https://forms.gle/Ci4oZGpFJGK7ERM88
4	2021-22	249	https://forms.gle/StS5D8LBpsnnakPeA
5	2022-23	410	https://forms.gle/3RAts4ZFTJK4HrGf9

5.1 Alumni Feedback Analysis

TABLE NO. 12

ALUMNI FEEDBACK IN ACADEMIC YEAR 2018-19

Academic Year	Ques.	Count/ Percentage	Poor	Average	Good	Very Good	Excellent
2018-19	Q2.a	Count	11	14	71	149	121
		Percentage	3.01	3.83	19.40	40.71	33.06
	Q2.b	Count	18	27	77	132	112
		Percentage	4.92	7.38	21.04	36.07	30.60
	Q2.c	Count	25	39	84	165	53
		Percentage	6.83	10.66	22.95	45.08	14.48
	Q2.d	Count	10	18	76	151	111
		Percentage	2.73	4.92	20.77	41.26	30.33
	Q2.e	Count	21	23	67	135	120

		Percentage	5.74	6.28	18.31	36.89	32.79
	Q2.f	Count	24	30	61	103	148
		Percentage	6.56	8.20	16.67	28.14	40.44
	Q2.g	Count	13	22	75	164	92
		Percentage	3.55	6.01	20.49	44.81	25.14

TABLE NO. 13
ALUMNI FEEDBACK IN ACADEMIC YEAR 2019-20

Academic Year	Ques.	Count/ Percentage	Poor	Average	Good	Very Good	Excellent
2019-20	Q2.a	Count	11	15	69	137	126
		Percentage	3.07	4.19	19.27	38.27	35.20
	Q2.b	Count	17	31	65	127	118
		Percentage	4.75	8.66	18.16	35.47	32.96
	Q2.c	Count	25	35	85	149	61
		Percentage	6.98	9.78	23.74	41.62	17.88
	Q2.d	Count	13	21	79	137	108
		Percentage	3.63	5.87	22.07	38.27	30.17
	Q2.e	Count	19	24	69	123	123
		Percentage	5.31	6.70	19.27	34.36	34.36
	Q2.f	Count	25	28	62	107	136
		Percentage	6.98	7.82	17.32	29.89	37.99
	Q2.g	Count	19	22	79	147	91
		Percentage	5.31	6.15	22.07	41.06	25.42

TABLE NO. 14
ALUMNI FEEDBACK IN ACADEMIC YEAR 2020-21

Academic Year	Ques.	Count/ Percentage	Poor	Satis- factory	Good	Very Good	NA
2020-21	Q2.a	Count	01	35	135	209	01
		Percentage	0.26	9.19	35.43	54.86	0.26

Q2.b	Count	02	67	142	147	23
	Percentage	0.52	17.59	37.27	38.58	6.04
Q2.c	Count	13	103	148	78	39
	Percentage	3.41	27.03	38.85	20.47	10.24
Q2.d	Count	06	45	130	194	06
	Percentage	1.57	11.81	34.12	50.92	1.57
Q2.e	Count	15	56	147	138	25
	Percentage	3.94	14.70	38.58	36.22	6.56
Q2.f	Count	10	89	126	98	58
	Percentage	2.62	23.36	33.07	25.72	15.22
Q2.g	Count	06	27	123	214	11
	Percentage	1.57	7.09	32.28	56.17	2.89

TABLE NO. 15

ALUMNI FEEDBACK IN ACADEMIC YEAR 2021-22

Academic Year	Q	Count/ Percentage	Strongly Disagree	Disagree	Neutral	Agree	Strongly Agree
2021-22	Q1	Count	12	12	39	91	95
		Percentage	4.82	4.82	15.66	36.55	38.15
	Q2	Count	15	17	43	87	87
		Percentage	6.02	6.83	17.27	34.94	37.94
	Q3	Count	12	27	55	84	71
		Percentage	4.82	10.84	22.09	33.73	28.51
	Q4	Count	14	15	46	87	87
		Percentage	5.62	6.02	18.47	34.94	34.94
	Q5	Count	18	21	62	79	69
		Percentage	7.23	8.43	24.90	31.73	27.11
	Q6	Count	16	07	44	70	112
		Percentage	6.43	2.81	17.67	28.11	44.98

TABLE NO. 16
ALUMNI FEEDBACK IN ACADEMIC YEAR 2022-23

Academic Year	Ques	Count/ Percentage	Strongly Disagree	Disagree	Neutral	Agree	Strongly Agree
2022-23	Q1	Count	11	15	73	185	126
		Percentage	2.68	3.66	17.80	45.12	30.73
	Q2	Count	10	19	66	154	161
		Percentage	2.44	4.63	16.10	37.56	39.27
	Q3	Count	14	18	83	181	114
		Percentage	3.41	4.39	20.24	44.15	27.80
	Q4	Count	13	21	84	166	126
		Percentage	3.17	5.12	20.49	40.49	30.73
	Q5	Count	19	24	74	151	142
		Percentage	4.63	5.85	18.05	36.83	34.63
	Q6	Count	15	14	62	132	187
		Percentage	3.66	3.41	15.12	32.20	45.61

Alumni feedback analysis is shown in the table no. 16. The Majority of alumni (92%) mentioned that the curriculum provides opportunity for the choices in selecting subjects. More than 85 % alumni think that the curriculum they experienced is updated. On an average 88 % alumni perceived that the contents are updated, well organised and better suited for achieving employment. Besides research and internship help in enriching knowledge & skills that suits the profession.

5.1. ALUMNI FEEDBACK GRAPHICAL PRESENTATION

FIGURE 14 :ALUMNI FEEDBACK IN ACADEMIC YEAR 2018-19

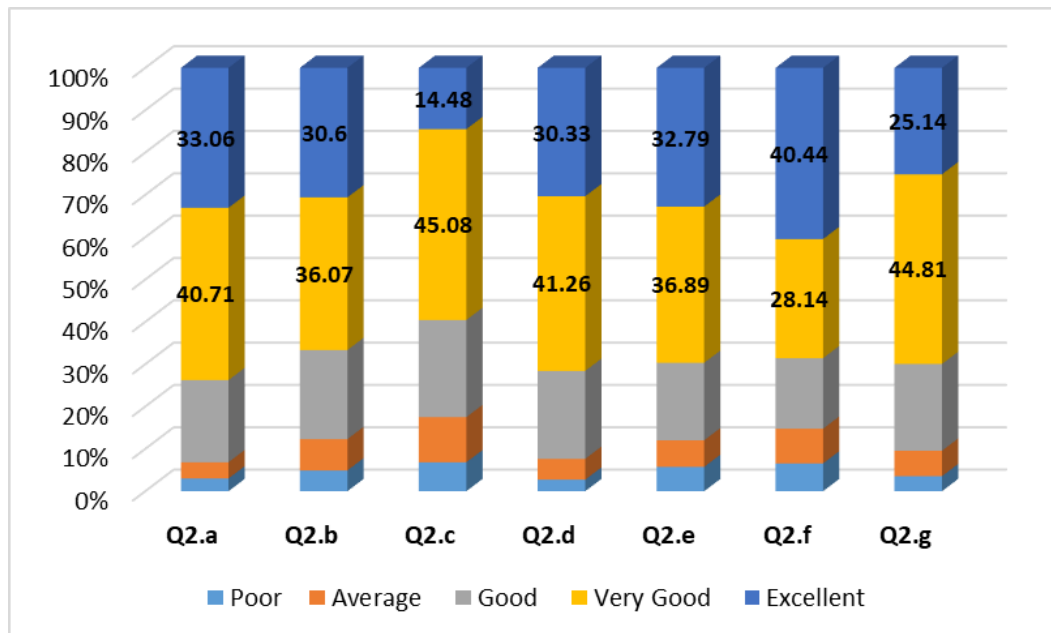


FIGURE 15 :ALUMNI FEEDBACK IN ACADEMIC YEAR 2019-20

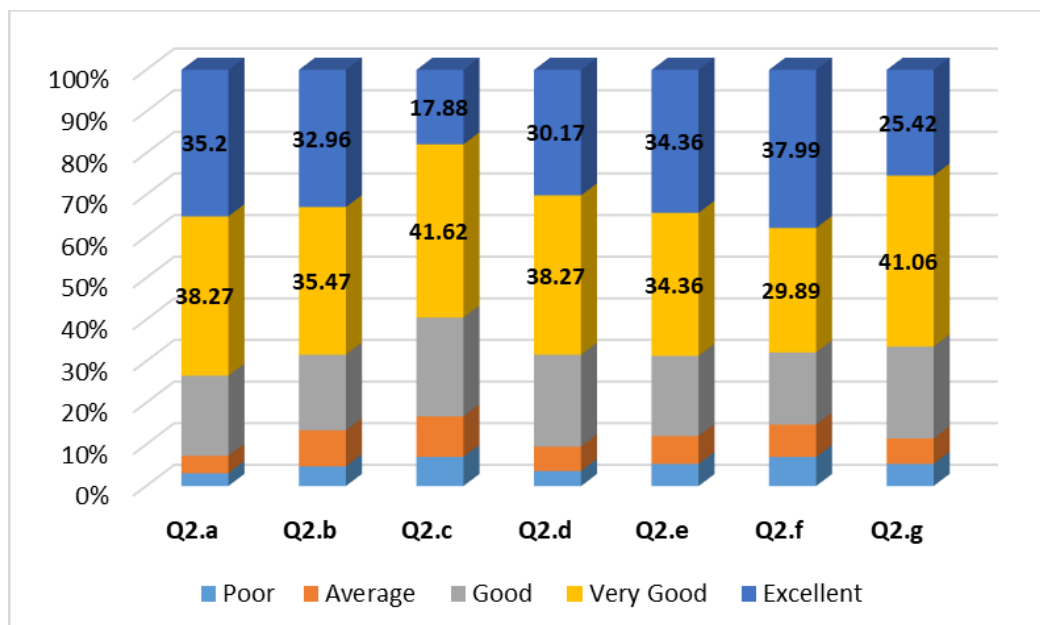


FIGURE 16 :ALUMNI FEEDBACK IN ACADEMIC YEAR 2020-21

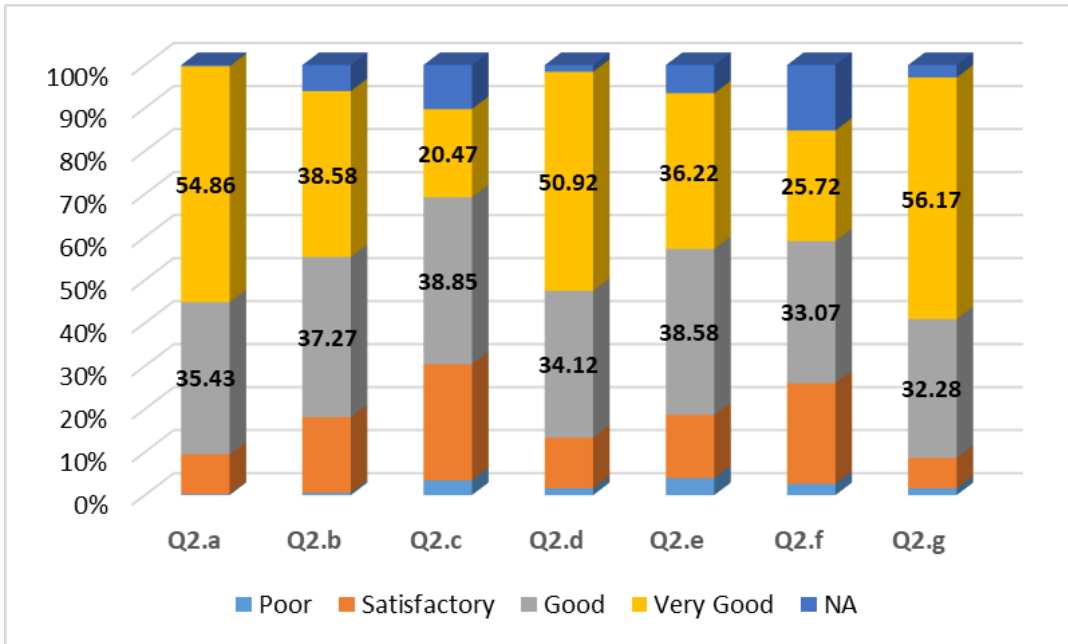


FIGURE 17 :ALUMNI FEEDBACK IN ACADEMIC YEAR 2021-22

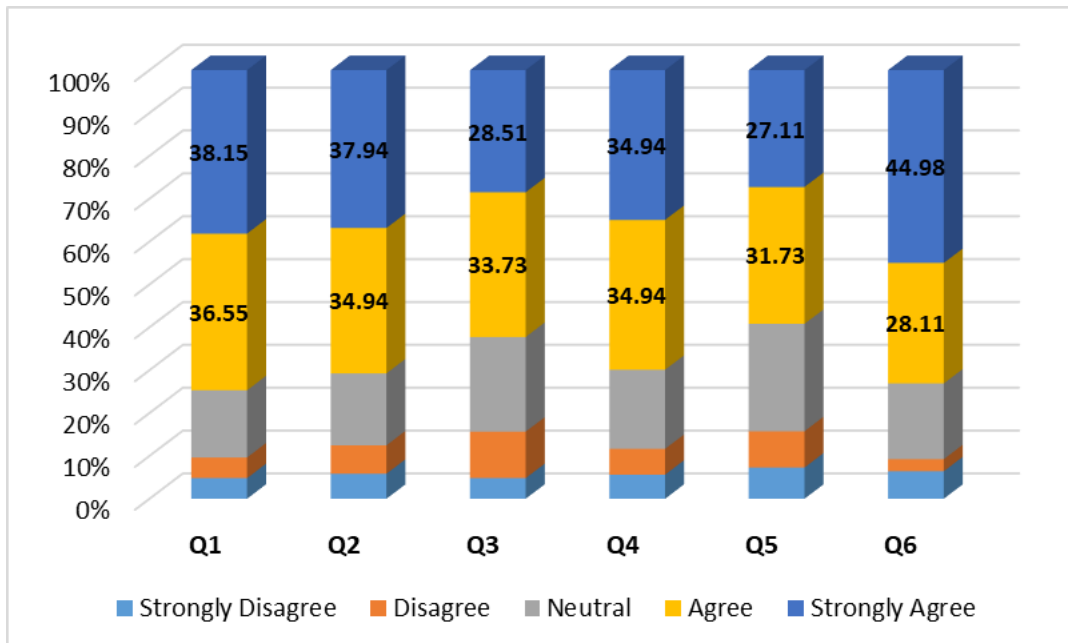


FIGURE 18 :ALUMNI FEEDBACK IN ACADEMIC YEAR 2022-23

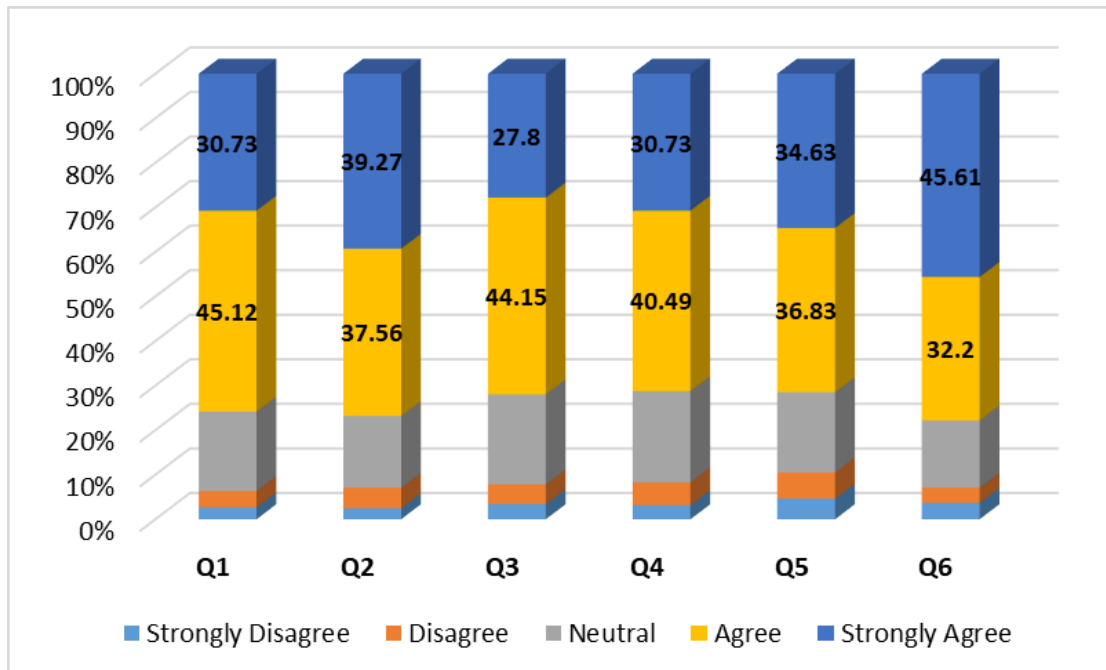


Figure no. 17 to 21 depict the Alumni feedback analysis from academic year 2018-19 to 2022-23. In 2018-19, more than 70 % alumni respondents agree for the quality of education, guidance and counselling and security of the students while about 60% to 70% responded positively to the other questions. In the year 2019-20, the alumni respondents feedback reflects that they acknowledge the Quality of education, library facility, guidance and counselling and security of students and computer, internet facility and hostel facility are at par.

In the academic year 2021-22, more than 70 percent alumni strongly agree that the curriculum contents more relevant and interesting subjects, also the order of content are well organized and updated. 73 percent respondents agree that research and internships help in enriching knowledges skills whereas less than 65 percent respondents agree to that current curriculum is more supportive for achieving employment and they have sufficient choice in selecting courses.

In the academic year 2022-23, approximately 75 percent of alumni respondents express that the content of the curriculum is well organized having more relevant and interesting subjects.